

Explanatory notes

for

The Sigrid Govenius Melsom Glass Negative Collection  
Shoot by Henrik Govenius Melsom

in

China, Japan, and Korea

2nd Edition

October 2017

UNI, Yoshikazu

unisan@m5.dion.ne.jp



File name DSC\_3488\_2.jpg  
 Country Korea  
 Subject Jangsaengpo [長生浦 장생포] whaling station of Nagasaki Hogeï [Whaling] Co. in Ulsan [蔚山 울산]  
 Date 1904-1909  
 Related image



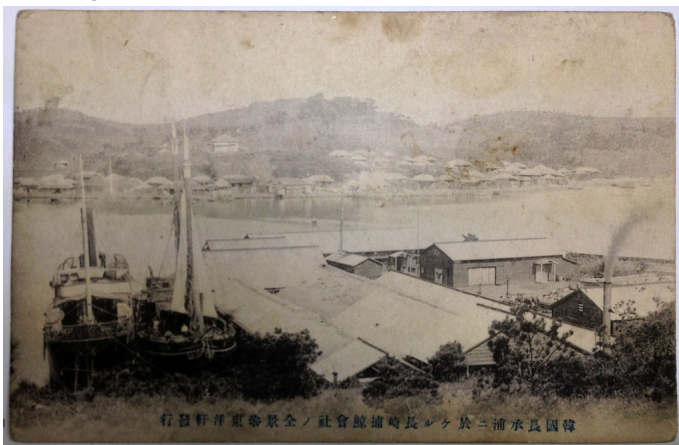
Postcard of the Ulsan Station of Nagasaki Hogeï (Isana Bunko 勇魚文庫, Tokyo).

Reference

Nagasaki Whaling had established the Jangsaengpo whaling station in 1904 and merged with the Toyo Hogeï [Oriental Whaling] in 1909 (Akashi 1910: 239-240)



File name DSC\_3488\_2.jpg  
 Country Korea  
 Subject Jangsaengpo [長生浦 장생포] whaling station of Nagasaki Hogeï [Whaling] Co. in Ulsan [蔚山 울산]  
 Date 1904-1909  
 Related images



Postcard of the Ulsan Station of Nagasaki Hogeï (Isana Bunko 勇魚文庫, Tokyo)

Reference

Nagasaki Whaling had set the Jangsaengpo whaling station in 1904 and merged to Toyo Hogeï [Oriental Whaling] in 1909 (Akashi 1910: 239-240)



File name DSC\_3543\_2.jpg  
 Country Korea  
 Subject Mt. Kumgang [金剛山 금강산] from nearby Jangjeon [長箭 장진] whaling station  
 Date 1895–1912  
 Related images



Kaizo-sha. 1930 [Taiyo Fishery 80-year history compilation committee]. 1960.

Reference Mount Kumgang - Wikipedia [https://en.wikipedia.org/wiki/Mount\\_Kumgang](https://en.wikipedia.org/wiki/Mount_Kumgang)  
 Note The funnel mark was deemed a Norwegian's. The top photo was left and right reverse in the first edition.



File name DSC\_3535\_2.jpg

Country Japan

Subject Kosuge Slip Dock [小菅修船場跡], in Nagasaki [長崎]. One of the World Heritage "Sites site of Japan's Meiji Industrial Revolution: Iron and Steel Shipbuilding and Coal Mining." The ship is the whale catcher Main.

Date 1906–1909

Related images



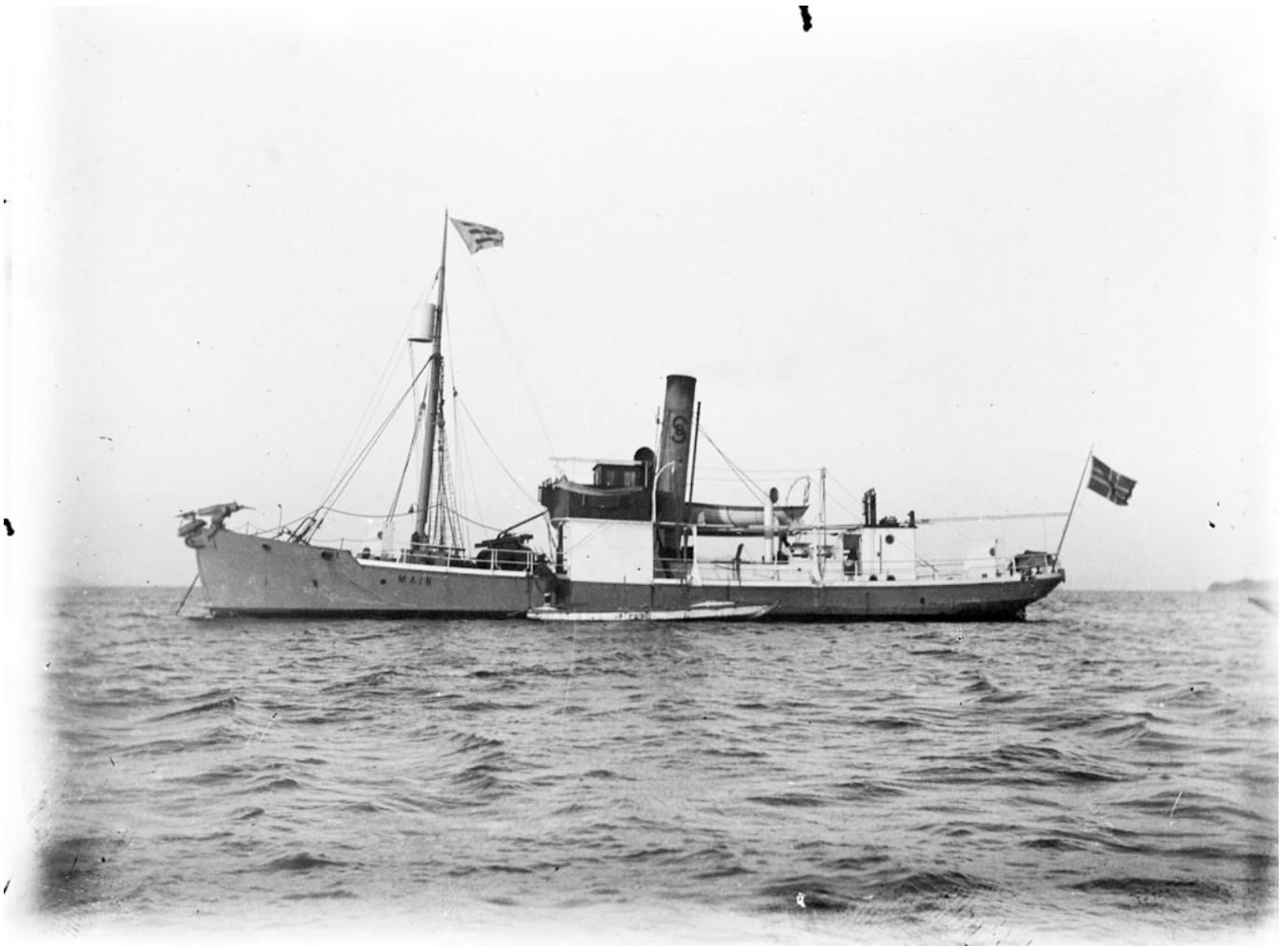
In 1872 (Nagasaki Library 長崎県立長崎図書館)

In 2017, by Uni

Reference The Main was chartered by the Nagasaki Hogeï for three years from 1906 (Shibuya 1967: 23)

Note Official website: Kosuge Slip Dock | NAGASAKI | STORY & SITES | Sites of Japan's Meiji Industrial Revolution.

<http://www.japansmeijiindustrialrevolution.com/en/site/nagasaki/component01.html>

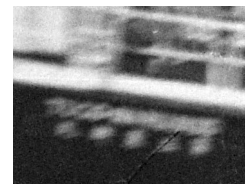
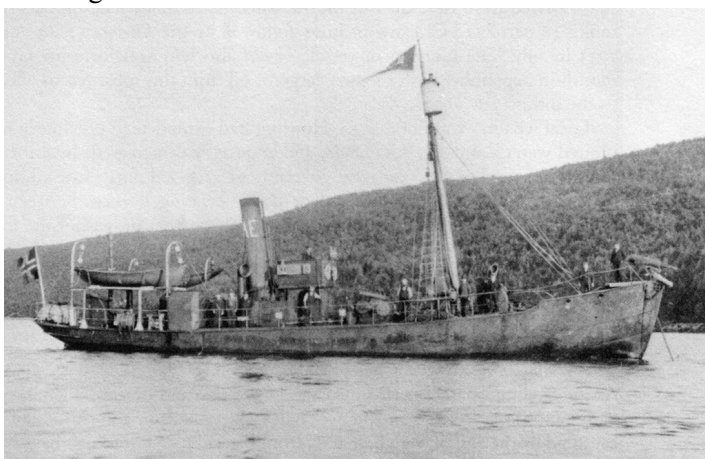


File name DSC\_3571\_2.jpg  
Country –  
Subject Whale catcher Main  
Date 1906–1909  
Related images

Reference The Main was chartered by Nagasaki Hogeï [Whaling] for three years from 1906 (Shibuya 1967: 23)  
Note The flag with three horizontal lines on the mast was of Nagasaki Hogeï, but the funnel mark was deemed a Norwegian's.



File name DSC\_3567\_2.jpg  
 Country Korea or Japan, Sea of Japan  
 Subject Probably the whale catcher Togo-maru No.2 [第二東郷丸]  
 Date 1906-1909  
 Related images



Dickinson and Sanger (2005: 51)

Magnified image of the upper photo. The Chinese characters are written from right to left.

Reference

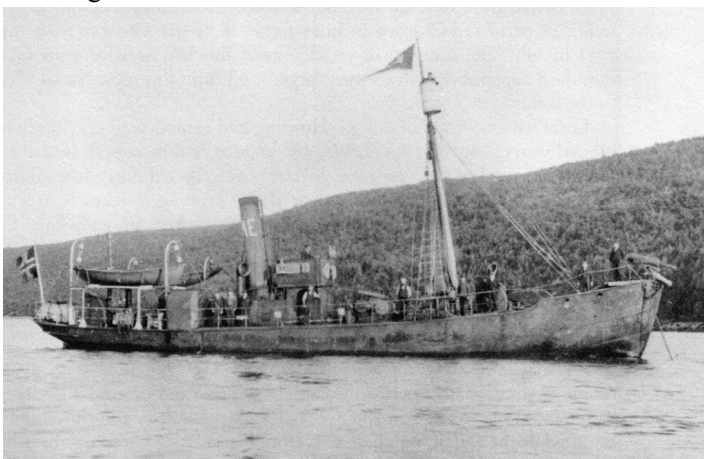
Nagasaki Hogeï purchased Humber and renamed it Togo-maru No.2 in 1906 (Shibuya 1967: 23).

Note

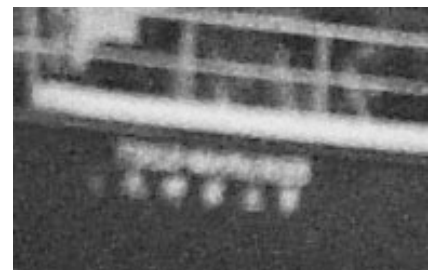
The funnel mark with three horizontal lines was of Nagasaki Hogeï [Whaling]. They had two catchers with five character names, 第一東郷丸 and 第二東郷丸. The sign of the catcher in the images looks the 第二 rather than 第一.



File name DSC\_3525\_.jpg  
 Country Korea or Japan  
 Subject Probably the whale catcher Togo-maru No.2 [第二東郷丸]  
 Date 1906–1909  
 Related images



Dickinson and Sanger (2005: 51) written from right.



Magnified image of the upper photo. The Chinese characters

Reference

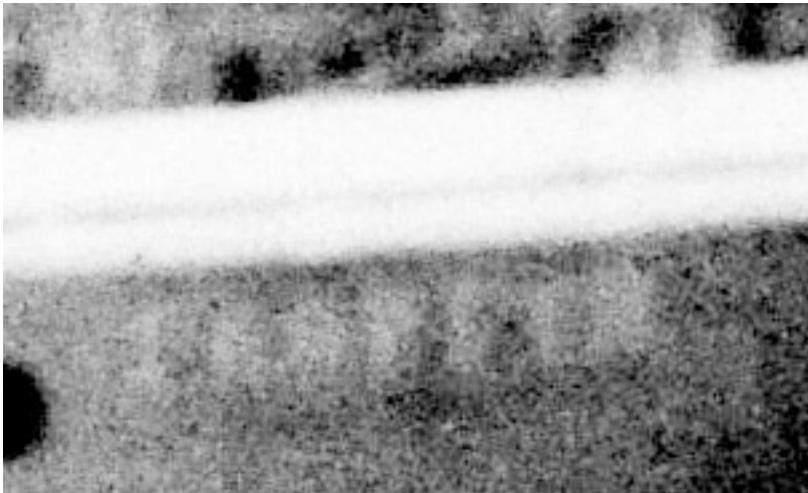
Nagasaki Hogeï purchased Humber and renamed it Togo-maru No.2 in 1906 (Shibuya 1967: 23).

Note The funnel mark with three horizontal lines was of Nagasaki Hogeï [Whaling]. They had two catchers with five character names, 第一東郷丸 and 第二東郷丸. The sign of the catcher in the images looks the 第二 rather than 第一.





File name DSC\_3529\_.jpg  
Country Probably Korea  
Subject Probably whale catcher Georgij [ГЕОРГИИ]  
Date 1906-1909 1895-1912  
Related images



Enlarged its sign in the broadside

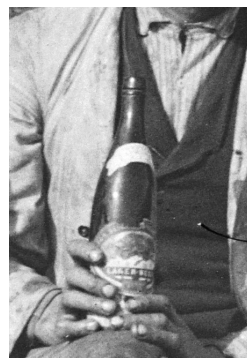
Reference

"Georgij" appears in Tønnessen (1967: 187, 188, 210).

Note



File name DSC\_3579\_.jpg  
 Country Korea  
 Subject Whale catcher Georgij [ГЕОРГИИ]  
 Date 1895–1904  
 Related images



Enlarged right corner of bridge, second letter form right is "I". Japanese brewery Kirin Beer

Reference  
 Crew of 12: captain. Russian; gunner, Norwegian; engineer. Russian; sailors, 8 Koreans; boy, Chinese (Watanabe 2006: 34–35, after Korean Marine Fishery Association Federation 1902. in Japanese).

"Georgij" appears in Tønnessen (1967: 187, 188, 210)

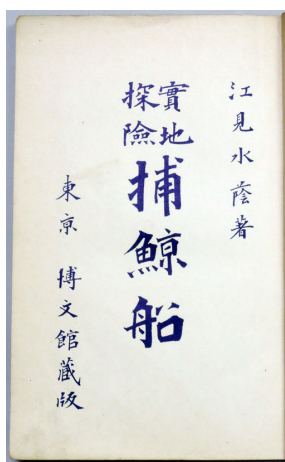
Note  
 Russian "I" was eliminated in 1918  
 (Russian alphabet - Wikipedia [https://en.wikipedia.org/wiki/Russian\\_alphabet](https://en.wikipedia.org/wiki/Russian_alphabet)).



File name DSC\_3564\_.jpg  
Country Korea  
Subject ~~A whale catcher: perhaps the Georgij, Olga [Ольга], Main or Togo maru No.2~~  
A whale catcher: probably the Nikolai [Николай]  
Date - 1895-1904  
Related images  
Rederence Watanabe 2006  
Note



File name MELSOM\_DSC\_9931.tif, DSC\_3347\_2.jpg  
 Country -  
 Subject Probably Sigrid Govenius Melsom  
 Date, estimate 1895-1907 1904-1907  
 Related images



Emi, S. 1907. Jicchi Tanken Hogeisen [A Reportage of a Whaling Boat]. The caption said, "A beloved daughter of gunner Melsom".

Reference Emi (1907), Krohn-Holm,(1972)

Note



File name DSC\_3467\_2.jpg  
Country Japan  
Subject Bronze statue of Nichiren Buddhist priest [日蓮聖人銅像], Fukuoka Prefecture  
Date 1904–  
Related images



In 2017, by Uni

Reference The statue was completed in 1904 (Official website).  
Note Official website: 銅造日蓮上人立像 | 文化財情報検索 | 福岡市の文化財  
[http://bunkazai.city.fukuoka.lg.jp/cultural\\_properties/detail/222](http://bunkazai.city.fukuoka.lg.jp/cultural_properties/detail/222)



File name DSC\_3399\_.jpg  
Country Korea  
Subject Busan [釜山 부산] Port  
Date 1895-1912  
Related images



"View of the city center from a breakwater in the Pusan Port" [釜山港突堤ヨリ市街ヲ望ム] in the photo album "Opening Ceremony of the Chiba Prefectural Fisheries Research Institute" [千葉県水産試験場開場式挙行記] (National Research Institute of Fisheries Science, FRA 国立研究開発法人水産研究・教育機構中央水産研究所)

Reference  
Note

These images were shot in Korea 1/3



MELSOM\_DSC\_9936.tif



DSC\_3437\_.jpg



DSC\_3460\_.jpg



DSC\_3324\_.jpg, MELSOM\_DSC\_9914.tif



DSC\_3313\_.jpg, MELSOM\_DSC\_9905.tif



DSC\_3346\_.jpg, MELSOM\_DSC\_9929.tif

These images were shot in Korea 2/3



DSC\_3344\_.jpg, MELSOM\_DSC\_9928.tif



DSC\_3315\_.jpg, MELSOM\_DSC\_9940.tif



DSC\_3558\_.jpg



DSC\_3556\_.jpg



DSC\_3552\_.jpg



DSC\_3431\_.jpg



DSC\_3546\_.jpg



DSC\_3393\_.jpg



These images were shot in Korea 3/3



DSC\_3341\_.jpg, MELSOM\_DSC\_9926.tif



DSC\_3352\_.jpg, MELSOM\_DSC\_9935.tif



DSC\_3355\_.jpg, MELSOM\_DSC\_9938.tif



MELSOM\_DSC\_9934.tif



DSC\_3357\_.jpg, MELSOM\_DSC\_9939.tif



DSC\_3314\_.jpg, MELSOM\_DSC\_9904.tif



DSC\_3319\_.jpg, MELSOM\_DSC\_9910.tif



MELSOM\_DSC\_9933.jpg

These images were probably shot in Korea



DSC\_3583\_.jpg



DSC\_3523\_.jpg



DSC\_3549\_.jpg



MELSOM\_B-9147.tif



MELSOM\_B-9149.tif

These images were shot in China



DSC\_3343\_.jpg, MELSOM\_DSC\_9930.tif



DSC\_3551\_.jpg

This images were probably shot in China



DSC\_3562\_.jpg

These images were shot in Japan, probably in Fukuoka



DSC\_3473\_.jpg



DSC\_3482\_.jpg



DSC\_3335\_.jpg, MELSOM\_DSC\_9922.tif



DSC\_3367\_.jpg



DSC\_3371\_.jpg



DSC\_3466\_.jpg



DSC\_3332\_.jpg, MELSOM\_DSC\_9920.tif



DSC\_3459\_.jpg

Others



DSC\_3559\_.jpg



Enlarged around the life ring

This image was probably shot someplace other than Korea or Japan because the ship name was SHIN..., but there were no whale catcher whose name was started with the letters SHIN in ca. 1900.

Bibliography

- Akashi, K. 1910. Honpo no Noruwei-shiki Hogeishi [A History of Japanese Modern Whaling]. In Japanese.
- Dickinson, A. B. and Sanger, C.W. 2005. Twentieth-century Shore-station Whaling in Newfoundland and Labrador.
- Emi, S. 1907. Jicchi Tanken Hogeisen [A Reportage of a Whaling Boat]. In Japanese
- Kaizo-sha. 1930. Nihon Chiri Taikai 12 Chosen [Japan Geography 12 Korea]. Kaizo-sha. In Japanese.
- Shibuya, T. 1967. Hogeikaiko [Whaling]. private edition. In Japanese.
- Taiyo Fishery 80 year history compilation committee. 1960. Taiyo Fishery 80 year history.
- Tønnessen, J. 1967. Den Moderne Hvalfangsts Historie Bind 2.
- Watanabe, H. 2006. Hogeimonдай no Rekishi Shakaigaku [A Historical Sociology of the Whaling Issue]. Toshin-do. In Japanese.
- Krohn-Holm, J. W. (1972) Slekten Melsom fra Vestfold. 125pp., Saturn Trykkindustri As., Drammen.